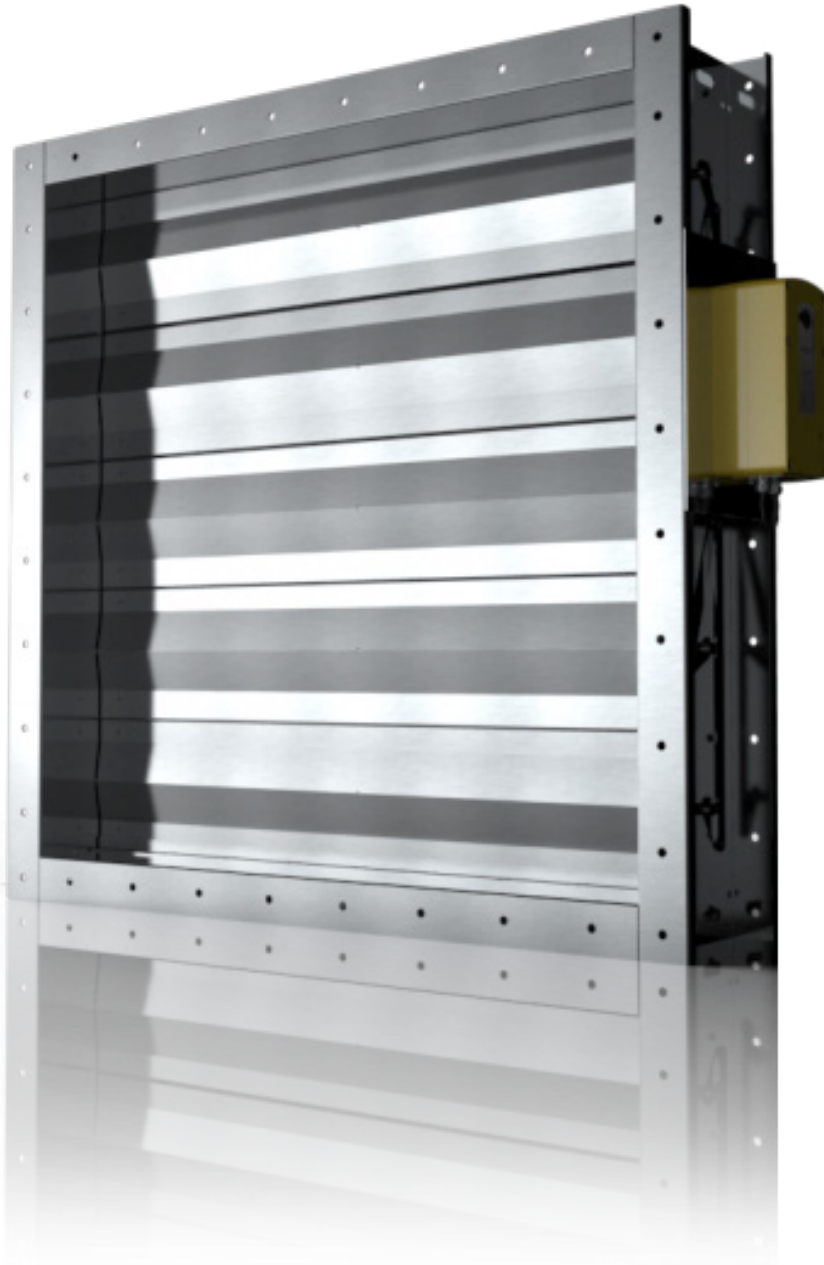


Marine Fire Damper (MFD)

Simplicity in design delivers long-life reliability with the Wozair MFD Marine Fire Damper / Fire and Gas Damper.



Marine Fire Damper

The stainless steel isolation seals, oil impregnated bearings and low leakage bearing assemblies prevent fire, gas and smoke spread through ventilation systems, maintaining the integrity of that division, bulkhead or deck. For smoke clearance, the damper has been tested at 300°C for 1 hour.

Manufactured using modern CNC laser cutting and folding processes, with metal to metal blade tip and blade edge sealing arrangements to achieve exceptional performance without the aid of gasket materials.

The MFD conforms to the requirements of the Marine Equipment Directive (MED) and Marine Equipment Regulation (MER)

The MFD is a tried and tested design, which has been supplied on hundreds of projects since 2003. It can be used in both safe and hazardous areas, and has a fully customisable design from simple control layouts to SIL2 compliant assemblies.

Technical Information

Minimum Size

150W x 150H x 200D mm
150W x 150H x 300D mm

Maximum Size

2500W x 2100H x 200D / 300D mm A-0 / A-30 – bulkhead
2500W x 1220H x 200D / 300D mm A-60 – bulkhead and deck
1500W x 1500H x 200D / 300D mm A-60 deck

Fire Rating

Tested according to IMO 2010 FTP Code Part 3, A0 - A60.

Leakage

Closed blade leakage to Class 2 EN1751
Case leakage to ATC 4 EN1751 / ATC 3 as an option

Explosive Atmosphere

ATEX/IECEX SGS UK Ltd /SGS Fimko Oy

Reliability Assessment

Functional Safety SIL 2 CSA SIRA Certificate

Materials of Construction

Casing and Flanges:

Materials

Stainless Steel 304L/316L (1.4307/1.4404); Galvanised Sheet Steel (GSS), Galvanised Mild Steel (GAM)
Other Stainless Steel grades available on request

Thickness

Minimum 2.0 mm (at 200 mm deep) 3.0-5.0 mm thick (at 300 mm deep)
Thickness following SOLAS
Fully welded

Flange drilling detail to ISO 15138 standard
Custom flanges as option Design Temperature (from -40°C to +50°C) subject to actuator selection

Blades:

Materials

Stainless Steel 304L/316L (1.4307/1.4404)
Other Stainless Steel grades available on request

Thickness

Minimum 1.2 mm double skin
Plug welded to solid shafts

Shafts:

Ø19.0 mm (3/4") continuous solid shaft in Stainless Steel 316/316L (1.4401/1.4404)

Bearings:

Oil impregnated sintered bronze. Low temperature option to -55°C

Side Seals:

Stainless Steel 316 (1.4401)

Linkage:

Stainless Steel 316L (1.4404)
5.0 mm thick link bars arranged to provide opposed blade motion

Blade Gasket:

N/A; metal to metal forms the seal

Mechanical Options

The following options can be incorporated if required.

- Increased flange thickness
- Transitions; various options for fitting into circular ductwork
- Earth bosses
- Lifting lugs
- Switch boxes for local testing either side of bulkhead

Control Options

Wozair dampers can be operated manually or with electric or pneumatic actuators. The pneumatic and electric controls will be selected based on your exacting requirements.

Dampers are designed to fail closed when fitted with an electric or pneumatic actuator. Full open can be considered on request. The five actuator manufacturers options are Pi Safety Components (previously Petz Industries), Rotork Schischek, Belimo, Johnson Controls and Powertork.

The actuator will be selected following your technical needs:

- Electric actuation system (24VAC/DC - 240VAC)
- Requested closing time (1, 2 or 3 seconds closing time or longer)
- ATEX Zone 1, 21 (II 2GD) and 2, 22 (II 3GD) or non-hazardous area, IECEx
- Design Temperature (from -40°C to +50°C) subject to actuator selection
Subject to electrical equipment ratings
- Contact Wozair for operation outside this temperature range.
- IP 54 or IP 66 subject to actuator selection.
- Environment (High corrosion resistance)

Type Approval Certification

DNV, ABS and Bureau Veritas
USCG (Mutual Recognition Agreement with MED)

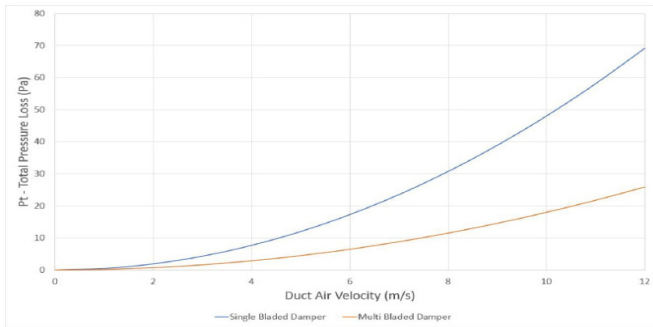
MED (2014/90/EU)

Module B Type Examination with DNV
Module D Certificate of Assessment based on quality assurance of the production process with DNV (UK / Houston / Singapore)

MER (MSN 1874)

Module B Type Examination with DNV
Module D conformity to Type based on quality assurance of the production process with DNV (UK)

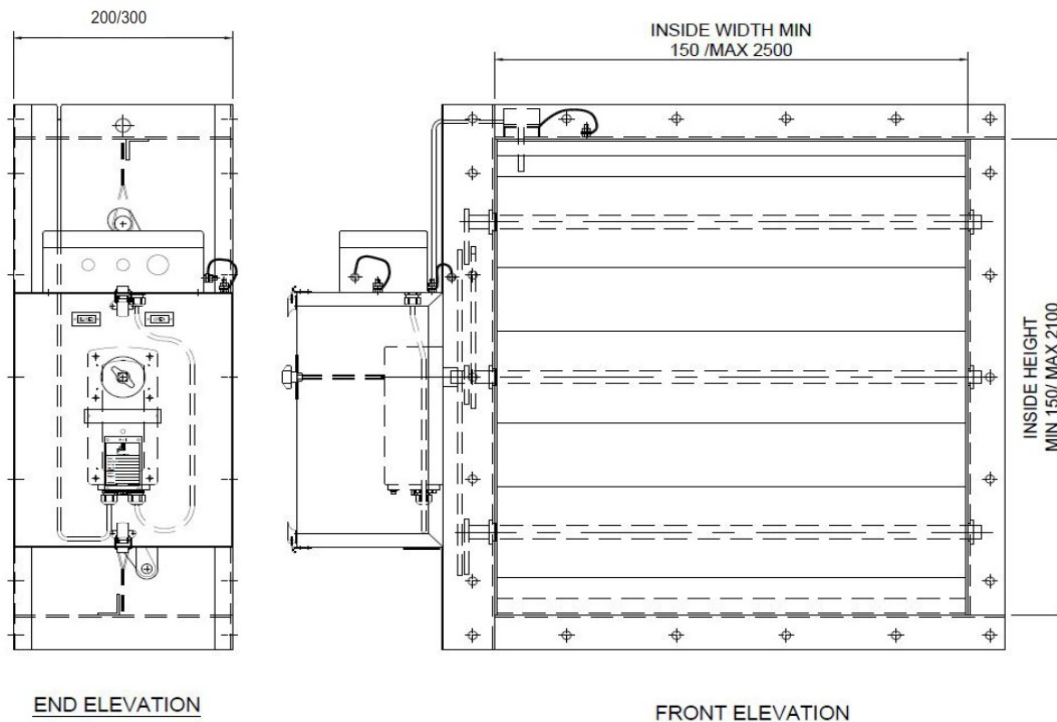
Performance



Full aerodynamic performance data is presented above and is based on conclusive tests.

Total Pressure Loss - the difference in pressure measured across the Fire Damper when the blades are fully open.

Dimension Drawing (Certified to A0 Fire Conditions)



Ordering

Type:	MFD	Duct Width:	500
Duct Height:	300	Case Depth:	200
Type Wozair: Marine Fire Damper			
Case Material:			
<u>Stainless Steel</u>			
Low Carbon	1.4307 = 304L		
Low Carbon	1.4404 = 316L		
<u>Mild Steel Sheet</u>			
Pre-Galvanised	FeP02 nac = GSS		
Galvanised after Manufacture	= GAM		
Case Thickness: 2.0 to 10.0 mm with various case depth options			
<u>Controls Options</u>			
P = Pneumatic			
E = Electric			
M = Manual			
Nominal: Clear inside duct dimensions			
Order Code Example:			
MFD/316L/2.0/500W/300H/200D/P			

Weights

MFD Bare Shaft Damper Weight Matrix - 200D (2mm thick)

Kg	H (mm)											
	150	300	450	600	750	900	1050	1200	1550	1900	2100	
W (mm)	150	9	13	17	21	25	28	32	35	50	60	66
	300	13	19	24	29	33	37	41	46	66	78	84
	450	18	24	31	36	42	46	51	56	83	96	103
	600	22	30	38	44	50	55	61	66	99	114	122
	750	26	36	45	52	59	65	71	77	116	132	140
	900	31	42	52	59	67	74	80	87	132	150	159
	1050	35	47	59	67	76	83	90	97	149	168	178
	1200	39	53	66	75	84	92	100	108	165	186	196
	1550	56	76	96	110	125	138	151	165	236	269	286
	1900	71	94	117	132	150	164	178	193	278	314	334
	2250	83	109	135	152	171	187	203	219	317	357	378
	2500	91	119	147	166	186	203	220	237	345	387	410

Please Note:

- For Manual handle add 3kg nominally
- For Belimo actuator with junction box add 3.5kg nominally
- For Pi Safety Components or Schischek actuator with junction box add 5kg nominally
- For Pneumatic actuator and components with controls enclosure add 15kg nominally

MFD Bare Shaft Damper Weight Matrix - 300D (3mm thick)

Kg	H (mm)											
	150	300	450	600	750	900	1050	1200	1550	1900	2100	
W (mm)	150	11	16	21	26	30	34	38	42	60	72	78
	300	16	22	28	34	40	44	49	54	78	91	98
	450	21	29	36	43	50	54	60	65	96	110	119
	600	26	35	43	52	60	65	71	77	115	130	139
	750	32	42	51	61	70	75	83	88	133	149	160
	900	37	49	59	70	79	85	94	100	151	168	180
	1050	42	55	66	78	89	95	105	111	169	187	200
	1200	47	62	74	87	99	105	116	122	188	207	221
	1550	66	87	105	125	143	154	169	181	261	292	313
	1900	82	107	127	150	170	182	200	212	308	340	364
	2250	96	124	147	172	195	207	227	240	351	386	413
	2500	105	136	160	188	212	225	247	260	382	418	447

Please Note:

- For Manual handle add 3kg nominally
- For Belimo actuator with junction box add 3.5kg nominally
- For Pi Safety Components or Schischek actuator with junction box add 5kg nominally
- For Pneumatic actuator and components with controls enclosure add 15kg nominally

Additional Images



Wozair Limited

Grosvenor Road
Gillingham Business Park
Gillingham
Kent
ME8 0SA
United Kingdom

Phone +44 (0)1634 790 336

Email hvac@wozair.com

Wozair (USA) Ltd

3601 North Loop
336 West
Conroe
Texas
77304
United States of America

Phone +1 936 521 5990

Email houstonhvac@wozair.com

Wozair (Asia) Pte Ltd

203 Woodlands Avenue
9 #06-51 Woodlands
Spectrum 2, 738956
Singapore

Phone +65 6890 6506

Email hvac@wozair.com.sg

Wozair Middle East

JAFZA One
Tower B, Office 1316
Jebel Ali Free Zone
Dubai, UAE
P.O. Box 262404

Phone +971 (0) 4 887 0147

Email dubaihvac@wozair.com